



Woodlands Road, Redhill

£1,300 Per Month





“

"Suffolk House and the local community have been brilliant over the past 4 years. The peaceful surrounding of Earlswood are accompanied by the best pubs and restaurants in the area along with miles of countryside and recreative opportunities. This has been balanced by a quick journey to London and other key locations. With a well lit main room, clean design and functional arrangements, relaxing and entertaining has been easy and joyful. The huge attic and smart storage in the property helps you utilise and enjoy the space available, along with a well sized bedroom, bathroom and kitchen day to day life is smooth. Living and socialising in the property has been an absolute joy and has created countless warm memories."

”



Just a short walk from town and Earlswood station, this one bedroom apartment is ready for you to move straight into. Redhill has an array of shops and is currently going through a huge renovation to create more homes, shops, restaurants and even a cinema!

This first floor flat is a great size, bright and open from plenty of natural light – the open plan layout is great for entertaining friends and family. Wooden floors line the living/kitchen area, and light décor throughout will allow you to add your stamp on the place with little fuss.

Black gloss cupboards and complimenting oak style counter tops in the kitchen and integrated appliances allow you to maximise the space that is on offer and you won't need to worry about running out of storage space. You can cook up a delicious meal whilst catching up on the chatter as friends relax up the table, if you're not in the mood for cooking there are plenty of places to order from or you can pop over the road to The Plough and get a delicious meal.

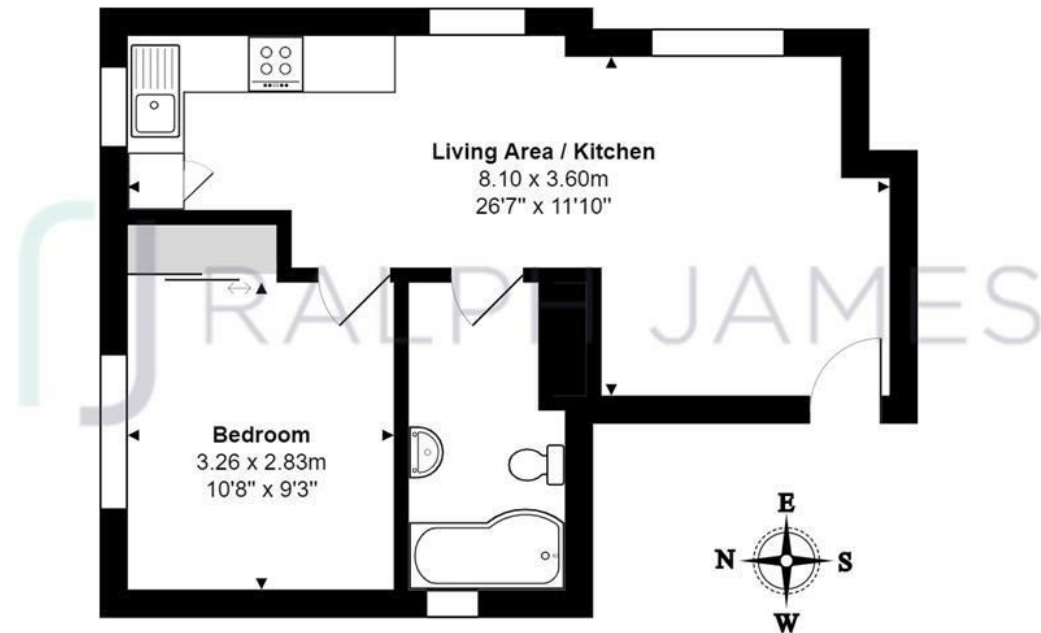
The double bedroom comes with built in wardrobes, saving you some additional space and as you lay in bed of an evening, you can admire the pretty tree views from the window. The bathroom is a good size, the P shaped bath invites you in to relax and unwind after a long day – soaking the stresses away. There is also an overhead shower for those more rushed mornings, the tiled finish will make cleaning an easy chore.

Outside there is a communal garden, you can dine al-fresco or just enjoy the sunshine during the warmer months. This property also comes with an allocated parking space, and there is street parking available for visitors.

Reigate is also within walking distance or a quick cab ride away, offering a great selection of entertainment all year round. You can grab dinner before heading off for a night out in one of the cosy pubs and during the summer Priory Park throws a "Beer Bop A Lula" with live entertainment and food.

Need to know

- AVAILABLE NOW
- 1 BEDROOM
- OPEN PLAN LIVING SPACE
- MODERN FINISH THROUGHOUT
- TOP FLOOR APARTMENT
- BATHROOM
- COMMUNAL GARDEN
- ALLOCATED PARKING SPACE
- CLOSE TO REDHILL
- CLOSE TO EARLSWOOD STATION



First Floor Flat

Suffolk House, Woodlands Road, Redhill

Total Area: 39.1 m² ... 421 ft²

FOR ILLUSTRATIVE PURPOSES ONLY.

Whilst every attempt has been made to ensure the accuracy of the floor plan shown, all measurements, positioning, fixtures, features, fittings and any other data shown are an approximate interpretation for illustrative purposes only and are not to scale.

No responsibility is taken for any error, omission, miss-statement or use of data shown.

The above statement applies to both 'Still Moving London LTD' and the Company or individual displaying this floor plan.

Unauthorised reproduction prohibited.

© Still Moving London LTD (www.stillmoving.london)

Interested?

redhill@ralphjames.co.uk

01737 765 555

1

ralphjames.co.uk

 RALPH JAMES